



# Chapel Road, Redhill

£1,500 Per Month







“

”



With Redhill's bustling high street just around the corner, this apartment places you right in the heart of convenience. Shops, cafés, and the mainline station are all within easy reach, connecting you directly to London, Gatwick, and Brighton. For weekend downtime, Reigate is only a quick cab ride away, offering its well-loved pub gardens and lively dining scene.

Inside, the layout strikes the perfect balance between practicality and style. The open-plan living and dining area feels spacious yet homely, with an archway subtly defining the kitchen. It's a sociable set-up, allowing you to prepare meals without missing a beat of conversation around the table.

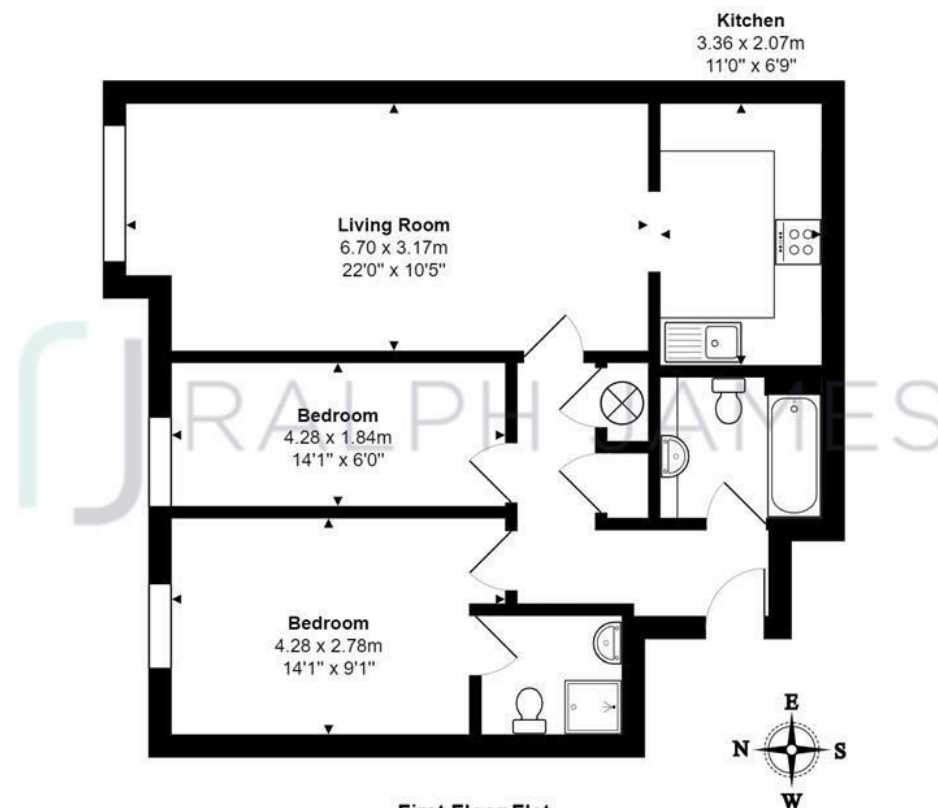
Two generous double bedrooms benefit from large windows, ensuring plenty of natural light throughout the day. Their neutral finish gives you the freedom to stamp your own style, while still leaving space for sizeable wardrobes or further furnishings. The main bathroom is well-appointed with a full-sized bathtub, ideal for unwinding, while the master bedroom enjoys the luxury of its own en-suite.

This is a home designed to suit the lifestyle of busy professionals — central, well connected, and finished with the comfort of modern living.



## Need to know

- Prime position moments from Redhill high street
- Easy access to London, Gatwick, and Brighton
- Short trip to Reigate's pubs, restaurants, and nightlife
- Open-plan living/dining area with archway to kitchen
- Two light-filled double bedrooms
- Main bathroom with bathtub plus en-suite to master
- Neutral décor for easy personalisation
- A sociable and practical layout, perfect for entertaining
- EPC: B
- Council Tax: D



## Interested?

redhill@ralphjames.co.uk  
01737 765 555

1

ralphjames.co.uk

Whilst every attempt has been made to ensure the accuracy of the floor plan shown, all measurements, positioning, fixtures, features, fittings and any other data shown are an approximate interpretation for illustrative purposes only and are not to scale.

No responsibility is taken for any error, omission, miss-statement or use of data shown.

The above statement applies to both 'Still Moving London LTD' and the Company or individual displaying this floor plan.

Unauthorised reproduction prohibited.

© Still Moving London LTD (www.stillmoving.london)

 RALPH JAMES